

## F1 Modular DIY 3D Printers F1 拼装式智能套件



F1 assembled 3D printer: USD 498/pc FOB

PLA (1.75mm) :USD 20/KG

Laser engraving head: USD 120/pc

Shipping 1 week after deposit

### Product Introduction:

☆ DIY 智能机械臂：拼装组装成 3D 打印机，也可改造为其他功能。例如：激光雕刻机、果酱趣味机、画笔机器人等（附加升级配置打印头，价格不等）



DIY robotic arm: assemble assembled 3D printer can also be transformed into other functions. For example: laser engraving machine, fun jams machine, paintbrush robots (contact [asliu@robotdigg.com](mailto:asliu@robotdigg.com) if you need upgrade the printing head)

☆ 缤纷色彩 3D 打印外壳：每套市场价 120 美元（附加配置）由 12 条 3D 打印机框+8 个 3D 打印连接扣+6 块彩色亚克力板组装完成。

Each market price of \$ 120 (additional configuration) consists of 12 3D printer 3D printing connection box +8 +6 block colored acrylic plate buckle assembly is completed.

### A Technical Parameters

运动系统：单轴机械臂装配结构：龙门式结构

设计方式：全金属模块化设计拼装套件固定基础：钢制机械孔位固定板功能实现：3D 打印机

（激光雕刻机、食品打印机、智能画笔等）

打印精度：0.1mm(100 μm) 以内最小打印层数：0.05 mm(建议 >=0.1mm)

最快打印速度：120mm/s(建议<=40mm/s)喷嘴直径：0.4mm



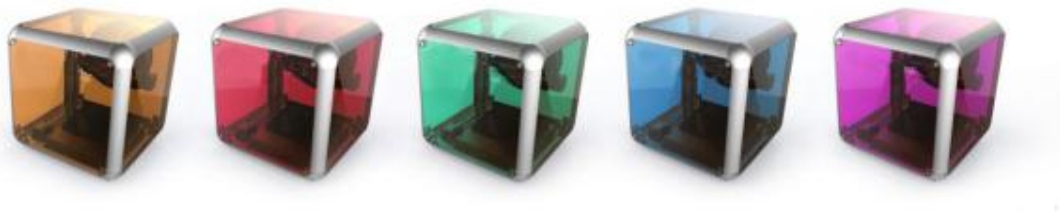
支持耗材:PLA

耗材直径:1.75mm 适配电源:110-220V, 50-60HZ

数据输入:SD 卡、USB 接口支持文件格式: Pcode 切片软件: Pango

打印尺寸: 约 110\*120\*125mm 包装尺寸: 约 376\*386\*196mm 操作系统: windows7 设备净重: 9.8KG

外壳 (增值项): 3D 打印款机框、亚克力多色挡板



Motion System: Single arm assembly structure: Gantry structure

Design: full metal modular assembly kit fixed base: steel plate mechanical holes fixed function realization: 3D printer

(Laser engraving machines, food printer, Smart Brush, etc.)

Printing precision: 0.1mm (100 $\mu$ m) within minimum print layers: 0.05 mm (recommendation  $\geq$  0.1mm)

The fastest print speed: 120mm / s (recommendation  $\leq$  40mm / s) nozzle diameter: 0.4mm

Support Supplies: PLA

Supplies Diameter: 1.75mm adapter power supply: 110-220V, 50-60HZ

Data Entry: SD card, USB interface supports file formats: Pcode slice software: Pango

Print Size: About 110 \* 120 \* 125mm Package Size: about 376 \* 386 \* 196mm Operating System: windows7

Net weight: 9.8KG

Housing (value-add): 3D printing and dispensing machine frame, multicolor acrylic bezel

Structure : Mechanical arm Features : Modularization parts Bulid Envelope : 110\*120\*125mm Accuracy : 0.05 mm

Filament Diameter : 1.75mm Works With : PLA

Nozzle Diameter: 0.4mm

Positioning Precision : 0.02(100mm 以内) Repeated Allocation Precision : 0.05mm

Power: 110-220v

Connect: SD card Compatibility: windows7 Package Size: 376\*386\*196mm Package Size: 9.8 KG

供货状态: 拼装散件供货

Delivery status: Delivery of spare parts assembled

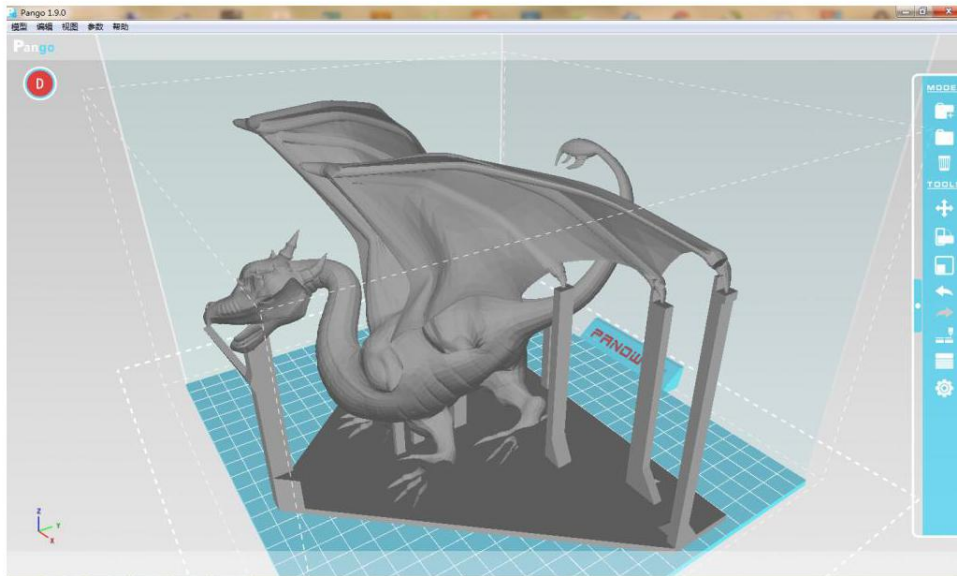
## B Software ( Free ) :

切片软件: Pango (拥有自主知识产权的智能切片软件)

Pango with independent intellectual property rights

软件特点: 切片速度快、操作简单、支撑智能、语言自动切换等。

Fast, simple, intelligent support



### C 配套丝材 Filament:

PLA ( 1.75mm ) :USD 20/KG, specify which color you need , or Color shipped randomly

### 产品特点 Product Features:

#### 1, 独特的模块化设计 **Modular Design**

全新高精度金属智能套件，让整机的机械性能更加稳定。独特的模块化设计让使用者能够快速的了解设备原理、轻而易举的组装使用起来。从而删繁就简的下的精益求精的结果，在后期改造需求下会更加方便使用者的切入和实现。

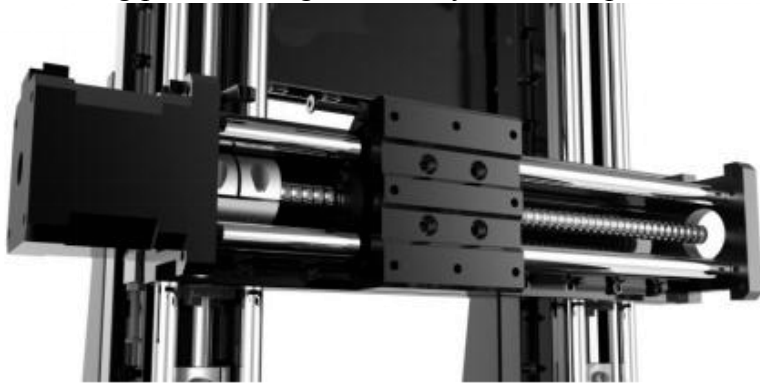
The new high-precision metal Intelligence Suite, so the mechanical performance of the machine more stable. Unique modular design allows users to quickly understand the principle of the device, easy to use assembly.



## 2, 高精度直线滑台运动 Precision Sliding Table Motion

整机主要模块是四根运动滑台，外形简练、组装简单、全金属材质，具有精度高、寿命长、磨损小、节能低耗摩擦系数小、构造紧凑、通用性强等特点。在组装过程中无需分辨，识别容易并具互换性、定位精度准确、效率高；是一种最理想的运动结构。

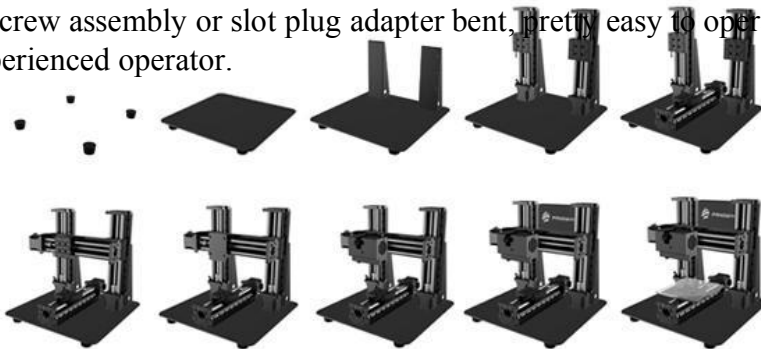
The main machine modules are four slide movement, shape concise, simple assembly, all-metal material with high precision, long life, low wear, low friction coefficient and energy saving, compact structure, versatility and so on. During assembly without resolution, and easy to identify with interchangeable positioning precision, high efficiency; an ideal sport structure.



## 3, 十步拼装完成 Ten Step Finish Work:

F1 注塑开模的高精度套件模块，根据装配手册能十个步骤快速拼装成一台 3D 打印机。每个步骤之间都是通过简单的螺丝装配或者卡槽的插拔衔接弯成，对零经验的操作者都是 So Easy 的事情。

F1 precision injection mold kit module, according to the manual assembly ten steps can be quickly assembled into a 3D printer. Between each step through a simple screw assembly or slot plug adapter bent, pretty easy to operate even to a zero experienced operator.

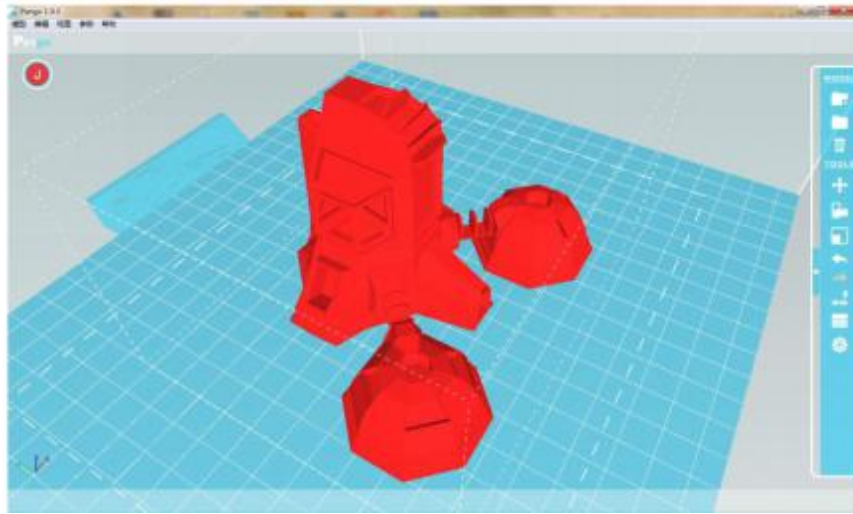


## 4, 全新切片软件 Pango Slicing Software:

Pango 为我司针对 FDM 类打印机研发的一款超智能切片软件，特点是操作简单、速度快、自带模型库、支撑智能等；切片数据算法精准极大的优化了成品效果。

Pango for the Division I super class for the FDM printer developed an intelligent slice software is characterized by simple, fast, comes with model library, intelligence and other support; slicing algorithm accurate data greatly optimizes the finished effect.





5, 高能的开发工具 **Smart Development Tools:**

F1 is not only an easy to use 3D printing assembly kit, is a more open world of smart tickets. Through hands-on process of assembling a combination of intelligent technology to enjoy the fundamental principle; realize their ideas with the latest science and technology to inspire everyone to join the science, mathematics, engineering, design, learning, creativity fervor. F1 through innovative transformation, enabling laser engraving, food printer, automatic brushes and other numerous functions.



6, F1 操作简捷 0 基础 **Easy to operate**

F1 use is quick and easy. A connecting computer chips using Pango software operation; another SD card, plug and play.

